

**Certificate of Analysis**

**Analysezertifikat**

**Certificat d'Analyse**

**Product name** C1q, human, clone JL-1

**Catalog number** TE2382-100UG

**Lot number** xxxxxXxxxx

**Expiry date** MMM YYYY

**Volume** 1 ml

**Amount** 100 µg

**Formulation** 0.2 µm filtered in PBS+0.1%BSA

**Concentration** 100 µg/ml

**Host Species** Mouse IgG2b

**Conjugate** None

**Endotoxin** <24 EU/mg

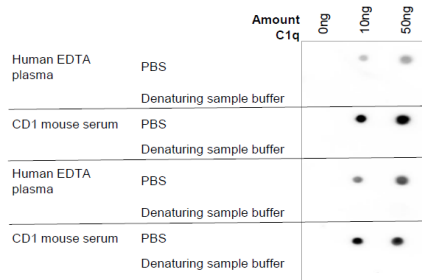
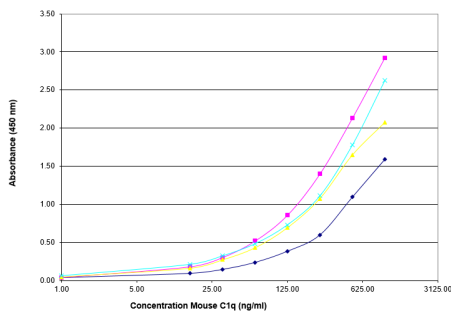
**Purification** Protein G

**Storage** 4°C

**Application notes**

	IHC-F	IHC-P	IF	FC	FS	IA	IP	W
Reference #	1		1		1	1,3,5		4
Yes	•		•		•	•		•
No								
N.D.		•		•			•	

*N.D.* = Not Determined; *IHC* = Immuno histochemistry; *F* = Frozen sections; *P* = Paraffin sections; *IF* = Immuno Fluorescence; *FC* = Flow Cytometry; *FS* = Functional Studies; *IA* = Immuno Assays; *IP* = Immuno Precipitation; *W* = Western blot



IA: clone JL-1 was used as a detection antibody in different concentrations.

Dot blot with mouse serum and human plasma with different amounts of C1q.

Dilutions to be used depend on detection system applied. It is recommended that users test the reagent and determine their own optimal dilutions. The typical starting working dilution is 1:50.

**General Information**

**Description**

The monoclonal antibody JL-1 recognizes the collagen-like region (CLR) of human C1q, a 459 kDa molecule consisting of three individual polypeptide chains. The antibody has been generated by immunization of C1q-/-C57BL/6 mice with purified mouse C1q.

C1q forms together with C1r and C1s the C1 macromolecule, the first component of the classical complement pathway. Interaction of immune complexes with C1q induces a conformational change within the C1 complex, which results in activation of the classical pathway. C1q functions as recognition unit by binding to the heavy chain of IgG or IgM (Fc gamma and Fc micro) provided that the immunoglobulins are bound to their antigen. Furthermore, C1q can also recognize molecular patterns associated with pathogens and it can bind to apoptotic blebs, where it activates the classical complement pathway and mediates phagocytosis. As such, C1q promotes the clearance of apoptotic cells and subsequent exposure of auto antigens, thereby preventing stimulation of the immune system.

C1q is predominantly produced by macrophages but also by follicular dendritic cells, interdigitating cells and cells of the monocyte-macrophage lineage. C1q deficiency has a profound effect on host defence and clearance of immune complexes. Absence of C1q may cause autoimmunity by impairment of the clearance of apoptotic cells. Inherited C1q deficiency is also associated with the development of systemic lupus erythematosus (SLE).

The monoclonal antibody JL-1 is reactive with the collagen-like region (CLR) only, which is the same region to which autoantibodies in mice and humans are binding. Anti-C1q autoantibodies deposit in glomeruli together with C1q but induce overt renal disease only in the context of glomerular immune complex disease. This provides an explanation why anti-C1q antibodies are especially pathogenic in patients with SLE.

<b>Immunogen</b>	Purified mouse C1q
<b>Aliases</b>	Complement component C1q, Complement C1q subcomponent subunit A
<b>Cross reactivity</b>	Mouse: Yes; Rat: Yes.
<b>References</b>	<ol style="list-style-type: none"><li>1. Trouw, L et al; Anti-C1q autoantibodies deposit in glomeruli but are only pathogenic in combination with glomerular C1q-containing immune complexes. <i>J Clin Invest</i> 2004, <i>114</i>: 679</li><li>2. Holers, M et al; Anti-C1q autoantibodies amplify pathogenic complement activation in systemic lupus erythematosus. <i>J Clin Invest</i> 2004, <i>114</i>: 616</li><li>3. Li, M et al; Development of a humanized C1q A chain knock-in mouse: assessment of antibody independent beta-amyloid induced complement activation. <i>Mol Immunol</i> 2008, <i>45</i>: 3244</li><li>4. Erlich, P et al; Complement protein C1q forms a complex with cytotoxic prion protein oligomers. <i>J Biol Chem</i> 2010, <i>285</i>: 19267</li><li>5. Kiriakidis, S et al; Complement C1q is hydroxylated by collagen prolyl 4 hydroxylase and is sensitive to off-target inhibition by prolyl hydroxylase domain inhibitors that stabilize hypoxia-inducible factor. <i>Kid Int</i> 2017, <i>92</i>: 900.</li></ol>
<b>Storage&amp;stability</b>	Product should be stored at 4°C. Under recommended storage conditions, product is stable for at least one year.
<b>Precautions</b>	For research use only. Not for use in or on humans or animals or for diagnostics. It is the responsibility of the user to comply with all local/state and federal rules in the use of this product. Hycult Biotech is not responsible for any patent infringements that might result from the use or derivation of this product.

---

We hereby certify that the above-stated information is correct and that this product has been successfully tested by the Quality Control Department. This product was released for sale according to the existing specifications. This document has been produced electronically and is valid without a signature.

Approved by Manager of QC

Date

Do you have any questions or comments regarding this product? Please contact us via [info@tecomedical.com](mailto:info@tecomedical.com)

[www.tecomedical.com](http://www.tecomedical.com)



A EURO BIO SCIENTIFIC COMPANY

Switzerland  
**TECO medical AG**  
Gewerbstrasse 10  
4450 Sissach  
Phone +41 61 985 81 00  
Fax +41 61 985 81 09  
Mail [info@tecomedical.com](mailto:info@tecomedical.com)

Germany  
**TECO medical GmbH**  
Wasserbreite 57  
32257 Bünde  
Phone +49 52 23 985 99 99  
Fax +49 52 23 985 99 98  
Mail [info@tecomedical.com](mailto:info@tecomedical.com)

Benelux  
**TECO medical Benelux BV**  
Computerweg 22  
3542 DR Utrecht, The Netherlands  
Phone +31 30 307 87 30  
Fax +31 30 307 49 39  
Mail [benelux@tecomedical.com](mailto:benelux@tecomedical.com)

Austria  
**TECO medical AG**  
Phone 0800 20 40 66  
Fax 0800 20 40 55  
Mail [info@tecomedical.com](mailto:info@tecomedical.com)